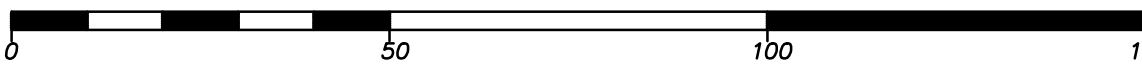
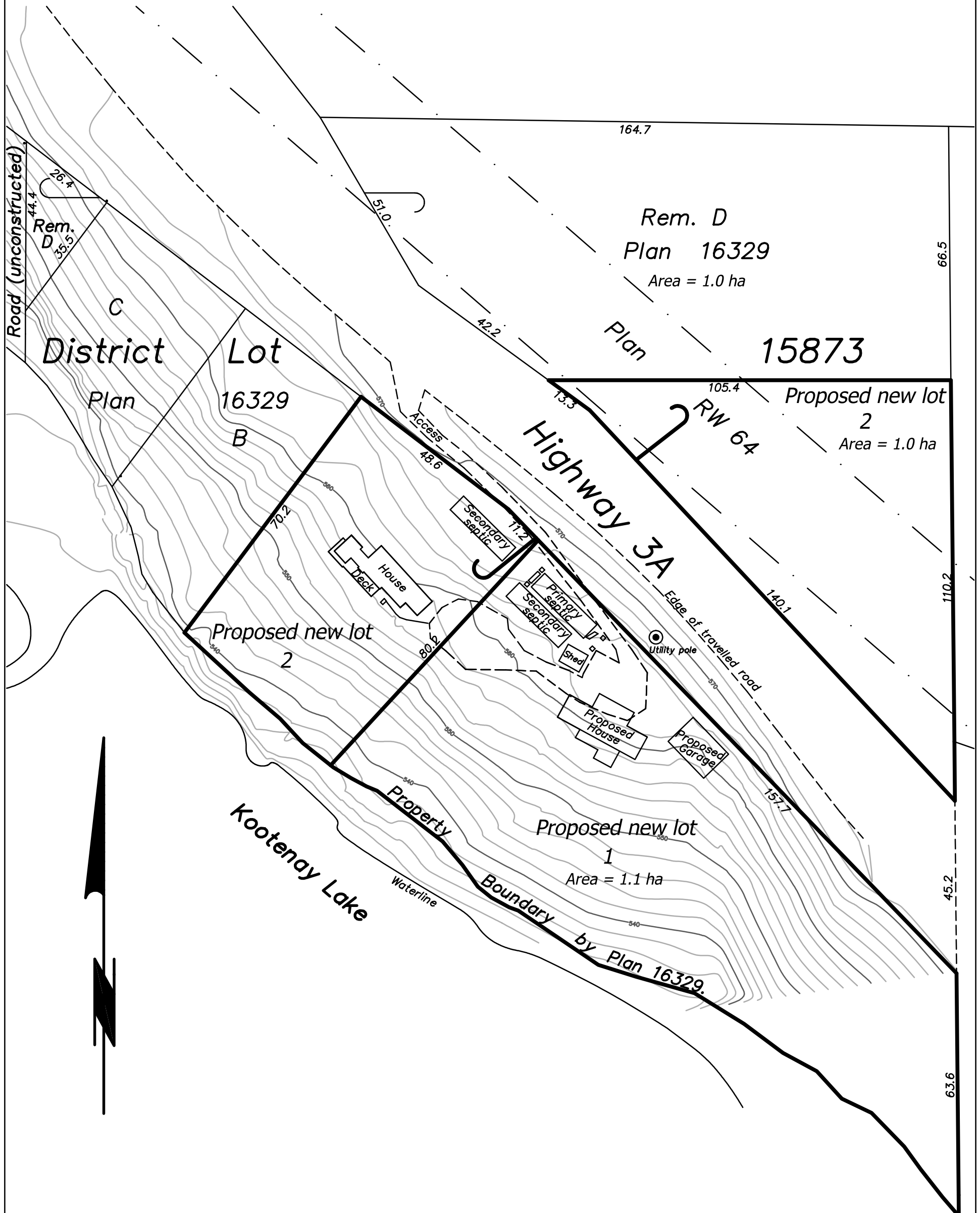


Proposal for Subdivision of Lots A and D, District Lot 15873, Kootenay District, Plan 166329.

Scale 1:1000 

All distances are in metres unless otherwise noted.
Elevations are geodetic and in metres. Contours are at 2.0 m intervals.



GRIFFITH SURVEYS
R. Griffith Land Surveying Inc.
Box 158 Creston, B. C., V0B 1G0
MM21095_Proposal

This plan lies within the
Regional District of
Central Kootenay.

The field survey represented by this proposal was
completed on the 24th day of November, 2021.
The drawing was completed on January 21st, 2022.
Robert A. Griffith, BCLS 568